

care.

church management. **simplified.**



The Uniting Church in Australia
QUEENSLAND SYNOD

Introducing UCare

Introducing UCare

THE WORLD'S BEST CHURCH MANAGEMENT PLATFORM

UCare is empowering the next generation of leaders to deliver discipleship, services and events with intelligence, speed & safety.

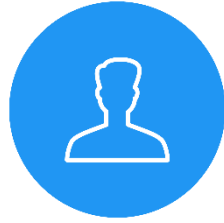
Churches all around the world have been rapidly joining in response to need and care during the COVID19 pandemic.

Why?

- Ability to coordinate teams more effectively
- Faster and better for online events, check-ins and pastoral care
- Improved online payment processing for events and donations
- Improved data insights through UCare Analytics
- Information is secure, stored in Australia and not accessible by other congregations.

Powerful Features

What you need,
when you need it,
on all your devices.



People



Analytics



Giving



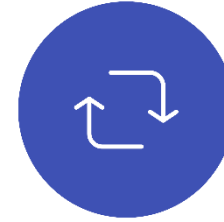
Registrations



Attendance



Groups



Automation



Rosters



Child Safety



Forms



Stores



Security

What UCare means for your congregation

- Better insights on key statistics that matter so you can lead with confidence
- Faster, better planning of services online and offline so you can execute with excellence
- Experts aren't required and you can reuse process templates and learnings from other congregations
- Easier online giving at lower transaction cost so you can receive more of what is intended for you
- Run services and meetings at 100% capacity under QLD Health restrictions with QR Codes for self-serve seat allocation

UCare Services & Teams empowers your people to plan, collaborate and deliver all your services & events from single site to multi site, with volunteers everywhere, at speed and in the cloud.

UCare Services & Teams

+ New Search
 Andrew 5

Service Multi-Planner

	North Campus Sunday Service February 2, 2020	North Campus Sunday Service February 9, 2020	North Campus Sunday Service February 16, 2020	North Campus Sunday Service February 23, 2020	North Campus Sunday Service March 1, 2020	North Campus Sunday Service March 8, 2020
Plan						
Band						
Worship Leader	✓ Lisa Peterson	✓ Zac Carter	✓ Lisa Peterson	? Zac Carter	✓ Lisa Peterson	+ Add person
Vocals	✓ Tom Andrews	✓ Jane Andrews	✓ Tom Andrews	✓ Jane Andrews	+ Add person	+ Add person
	✓ Jo Bray	✓ Mark Andrews	✗ Jo Bray	✉ Mark Andrews	+ Add person	+ Add person
Guitar	✓ Todd Smart	✓ Todd Smart	✓ Todd Smart	✓ Todd Smart	+ Add person	+ Add person
Bass	✓ Andrew Perterson	✓ Andrew Perterson	✓ Andrew Perterson	✓ Andrew Perterson	+ Add person	+ Add person
Keys	✓ Sarah Jones	✓ Jane Edwards	✓ Sarah Jones	? Jane Edwards	+ Add person	+ Add person
Drums	✓ Brad Nathans	Brad Nathans	✓ Brad Nathans	+ Add person	+ Add person	+ Add person
Production						
Director	✓ Mark Johnson	✓ Jade Jackson	✓ Mark Johnson	✓ Jade Jackson	✓ Mark Johnson	+ Add person
Video	✓ John Smith	✓ Patrick Smith	✓ John Smith	✗ Patrick Smith	+ Add person	+ Add person
	✓ Tif Baker	✓ Sally Carter	✉ Tif Baker	✓ Sally Carter	+ Add person	+ Add person
Lighting	✓ Beth Low	✉ John Baker	✓ Beth Low	✓ John Baker	+ Add person	+ Add person
Words	✓ Kath Bray	+ Add person	✓ Kath Bray	+ Add person	+ Add person	+ Add person
Hosting						
Lead	✓ Julie Smart	✓ Beth Low	✓ Julie Smart	✗ Beth Low	✓ Julie Smart	+ Add person
Offering count	✓ Julie Smart	✓ Beth Low	✓ Julie Smart	✗ Beth Low	✓ Julie Smart	+ Add person
	✓ Mark Bray	✉ J Chan	✓ Mark Bray	? J Chan	+ Add person	+ Add person
Host	✓ Anna Smith	✓ Tina Jackson	✓ Anna Smith	✓ Tina Jackson	+ Add person	+ Add person
	✓ Mark Bray	✓ Mark Bray	✓ Mark Bray	✓ Mark Bray	+ Add person	+ Add person

UCare Processes & Automation Studio connects everyone to the right information and the right people at the right time using the intelligent power of UCare.

UCare Processes & Automations

The screenshot displays the UCare user interface. At the top, there is a navigation bar with a heart icon, a '+ New' dropdown, a search icon, and the text 'Search'. On the right side of the navigation bar, there is a heart icon, 'UCare', a notification bell, and a close button. Below the navigation bar, a progress bar shows several steps, with the current step being 'Are they Connecting call' (highlighted in blue), followed by 'Church Regular' and 'Church Friend'. The main content area features a profile for 'Anna Smith', a female, 34, married, and active, with a phone number '0487 654 321'. Below the profile, there is a section for 'Church Forms' with a button 'Are they connecting →'. Underneath, there are input fields for 'Assignee' (Sarah Jones) and 'Due' (Thursday, 12 March 2020 at 10:00 AM), and a 'Started' toggle switch. At the bottom of the profile section, there are tabs for 'Notes', 'Profile', 'Scheduling', 'Attendance', 'Processes', and 'History'. Below the tabs, there is an 'Add note' button. The background of the interface shows a list of other users and their assignees.

UCare Processes & Automations

Church
Are they connecting

Person*

Anna Smith

First name* — only one name please: Anna
Last name*: Smith

Mobile phone: 0487 654 321
Email:

Birthday: Monday, 20 May 1985
Gender: Male, Female, Unspecified

Have they connected and become a regular?
 Yes
 No

They are interested in?
 Joining a connect group
 Serving/Volunteering

Where do they want to serve?
 Kids
 Youth
 Creative
 Hosting
 Administration

Save or Cancel

UCare Check-in now for online & offline events
empowering faster, easier and safer check-ins for all
who attend your services & events.

UCare Check-in

The screenshot displays the UCare Check-in interface. At the top, there is a navigation bar with a heart icon, a '+ New' button, a search icon, and the name 'Andrew' with a dropdown arrow. A notification bell icon shows 5 alerts, and a help icon is also present.

The main content area is titled 'Check-in Roster'. It features several filters: 'Kids', 'Toddlers', 'Toddlers 9 AM', and 'Print to Brother 820'. Below these filters, it shows '4 Checked in' and '0 Checked out', along with 'Stats' and 'Forms' links. A search bar is provided with the placeholder text 'Search by name, number, barcode or security code'. To the right of the search bar are three filter buttons: 'Attended & Absent', 'Members & Visitors', and 'Last Name'.

The roster lists the following children:

- Sophia Andrews
- George Baker
- Tom Bray
- Suzie Chan (Only mum can collect)
- Anna Jackson
- Noah Jones
- Peter Smart
- Jess Smith (Allergic to Peanuts)

A context menu is open over Sophia Andrews, listing the following actions:

- Edit person
- Print name tag
- Print security ticket
- Send SMS
- Remove from group

UCare Giving means more giving goes where it is meant to – to the care and discipleship of your members.

UCare Giving

The giving app heavyweights thrive off the generosity of church members, taking an unfair clip of the 'widow's mite' that is sacrificially given towards your vision & mission.

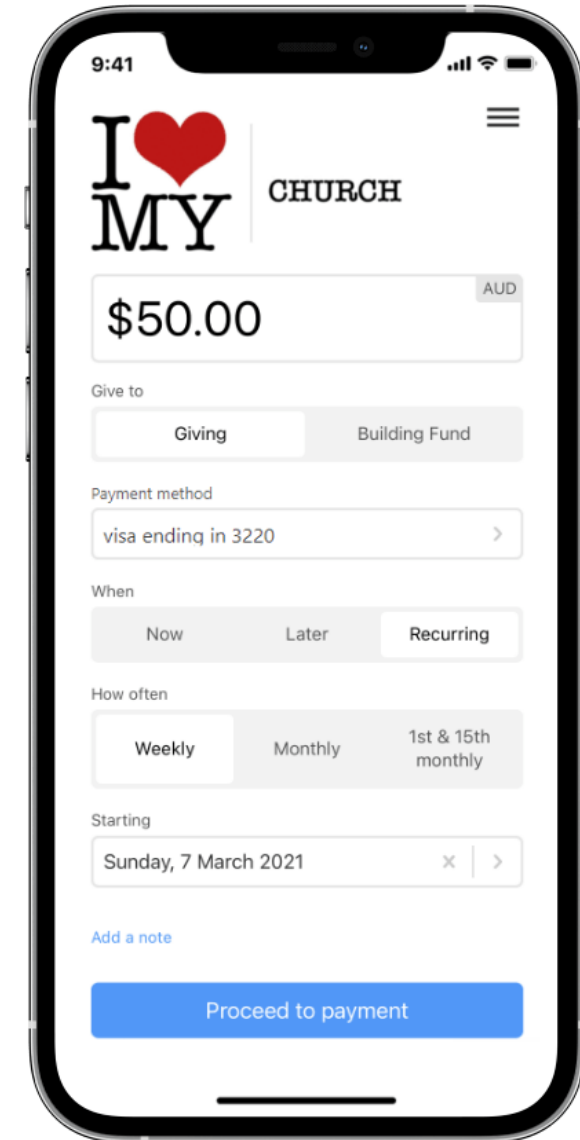
We see this unfair clip as a tax on people's tithe. And while cheaper bank options exist, for many they are difficult to use.

That's why we are now giving you donation tools built in with no extra transaction fees from UCare*.

With UCare Giving your people can manage all their online payment options in one place.

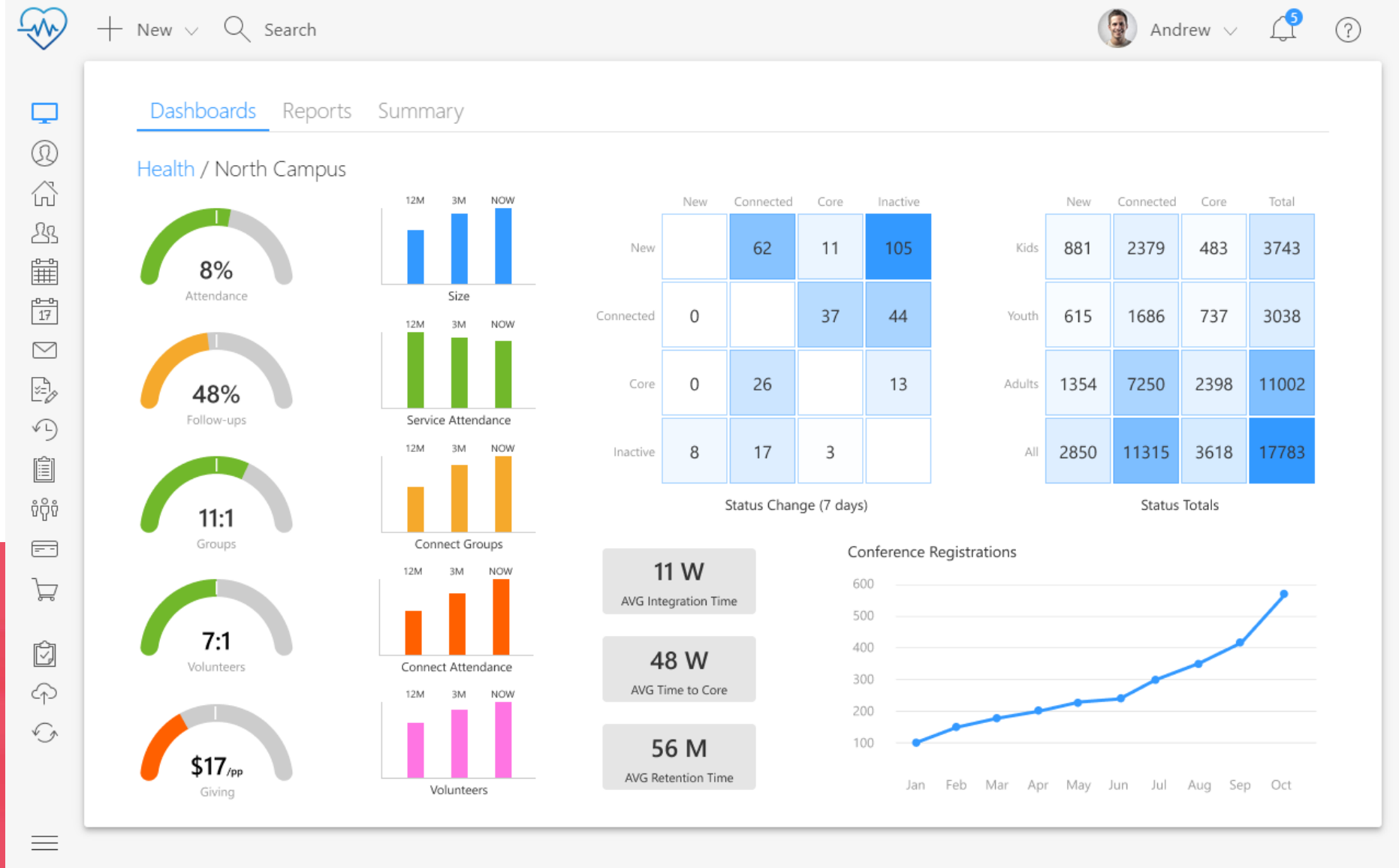
They can now do one-off or recurring payments with Apple Pay, cards or direct debit from bank accounts. Provide payment points via your church app, your website, a QR code, or share a link.

* Transactions are processed by Stripe. Transaction fees start at 1.75% + 30¢, with discounts available upon application to Stripe. Comparison transaction fees range from 1.9% - 3.2%



UCare Analytics equips you to make smarter decisions, faster, so your people experience better outcomes in leadership, discipleship and well.... everything 'ship.

UCare Analytics



UCare Analytics*

KEY FEATURES

- With UCare Analytics, you can see what's happening across your church without the need of a data scientist.
- Out of the box reports, give you a view of the data you care about, so you can care about what matters most, people.
- And, if the dozens of out of the box reports do not ask the right questions, you can custom build any report or dashboard you want to.
- Experience the power of natural language queries to create charts and reveal insights in seconds.

* Only available in the UCare Lighthouse edition.

NOW IS THE TIME

HERE IS HOW TO GET STARTED



Getting Started

HOW TO

1. Email onechurchconnect@ucaqld.com.au to express your interest.
2. The One Church Connect team will provide you with answers to any questions.
3. Your Church Council will need to agree to using UCare, via email or in writing.

Please see the [Uniting Church UCare FAQ](#) for further information.

UCare for Denominations - Growth Edition – monthly subscription

15¢ / active person

UCare for Denominations – Lighthouse Edition – monthly subscription

25¢ / active person

- All prices are GST inclusive
- [Frequently asked questions](#)
- Getting started guides and online help centre included
- Additional support available via the [One Church Connect Facebook group](#), tailored training available (contact for a quote)

Frequently Asked Questions

Q: Where is data stored?

Your data is stored in Australia; removing issues related to data sovereignty and governing laws.

Q: Who are considered active/charged for?

Any person that is recorded as having attended 3+ times in 60 days also becomes active. Imported people and people in a public group in UCare are considered active.

Q: Can you deactivate people?

Yes, you can “Archive” an individual or multiple people. People marked deceased are automatically archived.

Q: Are archived & new people charged for?

No, you are only charged for active people.

Q: Can you still access archived people?

Archived doesn't mean deleted. You can still update archived profiles, reactivate, send email/SMS, add notes, check-in and more.

Q: How do we pay for the service?

The amount will be billed to your congregation by Queensland Synod's Business Development Unit.

Q: Can UCare help migrate our data?

Yes! The UCare team has several tools to help migrate more of your data to UCare. The support team are happy to help.

Q: Can I import custom fields?

Yes! You can import as many custom fields as you need; you can even give your users the ability to create custom fields on the fly if you want.



Thank you.